

# Contents

	<u>Page Number</u>
Foreword .....	2
Parish Plans .....	2
Seal Parish Steering Groups.....	3
Seal Parish Plan.....	4
Historical Background.....	4
Analysing the Results.....	4
Traffic & Roads in Seal.....	5
Parking.....	6
Speeding in the Rural Lanes.....	7
Verge Cutting and Wildlife .....	8
Road Maintenance .....	8
Housing.....	9
Rubbish Collection & Litter.....	9
To Improve Facilities for Youth.....	10
Improve Police Presence and Consultation.....	10
Communication in the Parish .....	11
Miscellaneous Topics .....	11
Parish Map showing Wards, AONB & Conservation Areas .....	12 & 13
 <b>Valued Features</b>	
▪ Village Halls, Seal Pavilion & Seal Library .....	14
▪ Schools & Pubs .....	15
▪ Wildlife.....	16
▪ The Rural Environment.....	17
▪ Churches & Footpaths/Bridleways .....	18
A Challenge to Communities? .....	19 & 20
Action Plan .....	21
Directory.....	22 & 23
Acknowledgements .....	24

# FOREWORD

## Parish Plans

In November 2000 a Rural White Paper ‘Our Countryside – The Future’ was published by the Government and initiated the concept of parish plans. The purpose is to:

‘Identify key facilities and services, set out the problems that have to be tackled and demonstrate how distinctive character and features can be preserved.’

A questionnaire was delivered to every household in the Parish of Seal in July 2004 and each Ward had a committee to hold their own public meeting and later to review the results from their area. These three groups then collaborated to produce the final plan. Response rates varied being higher in the rural areas as detailed below.



Seal 36.2% response rate



St Lawrence 61% response rate



Underriver 68% response rate

## Seal Parish Steering Groups

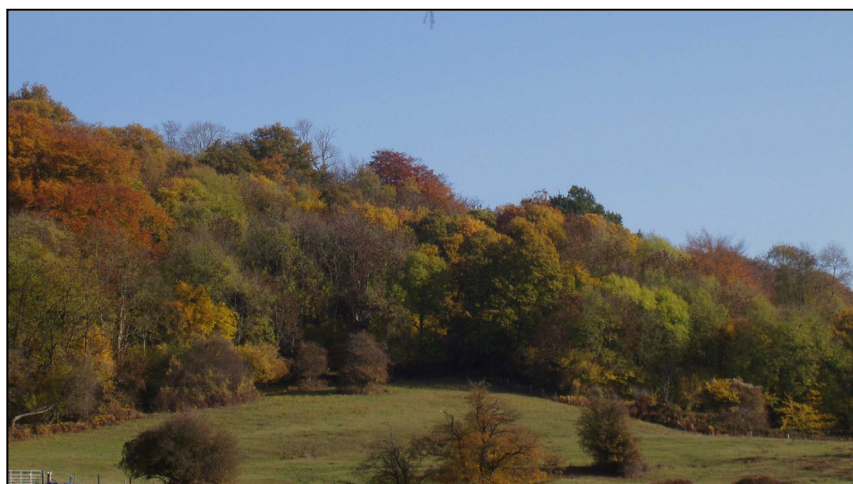
The composition of the Steering Group and Ward committees varied during the preparation of this Plan. The three Ward teams are listed below and others who were involved are mentioned under “Acknowledgements”.

*The “quotes”, shown like this, are taken from the questionnaire comments.*



**The St Lawrence Group**  
was led by Gary White and  
included  
Janice Brooker  
Peter Granville  
John Green  
Diane Hesketh-Williams  
Graham Moynes  
Bridget Stephens

**The Underriver Group**  
was led by Juliet Simpson  
(who prepared the text & images)  
and included  
Gordon Hedley  
Nick Jordan  
Betty Tong



**The Seal Group**  
was, in the later period,  
led by Peter Mountfield  
and included  
Marion Gilchrist  
Christine Hide  
Jennifer Medd



## SEAL PARISH PLAN

To prepare a plan for Seal is quite a challenge, because it is such a diverse area with three separate Wards: Seal, Underriver and St Lawrence. Seal includes Godden Green; St Lawrence includes Stone Street, Bitchet Green and Seal Chart; Underriver includes Fawke Common

See the map in the centre for details.

## HISTORICAL BACKGROUND

The present civil parish, like the old church parish, is long and narrow, and very similar in shape to about twenty others under the North Downs. It stretches south from the Vale of Holmesdale, over two sandstone ridges (Seal Chart and the Greensand Ridge) down into the Weald beyond Underriver. These shapes probably developed to give the villagers access to a wide range of different soils, and to the swine pastures in the Weald.

Seal, and the later surrounding hamlets of Seal Chart, Godden Green, Stone Street and Underriver, remained agricultural communities well into the twentieth century. But from the 1750s onwards, particularly with the coming of an east-west turnpike, roughly along the present A25, and of a railway line a hundred years later, Seal became part of the wider economy, first of Sevenoaks and eventually of Greater London. When the population expanded dramatically after the First World War, Seal village began to change. Between the wars, the privately owned Wildernes Park, just south of the village, was developed as an estate of large private houses. After 1945, extensive new housing areas, some of it originally developed as Council housing, spread along Childsbridge Lane to the north of the village centre, and this is where a large part of the population of Seal now lives. Today, Seal still retains an important green wedge that prevents it becoming a Sevenoaks suburb, and this must be preserved at all costs.

The nearby hamlets remain essentially rural, although farming employs far fewer people than in the recent past. Now agricultural contracting has become an important source of income for some of those who work on the land. Most of the Parish now forms part of the Kent Downs

Area of Outstanding Natural Beauty, and there are several Sites of Special Scientific Interest. There are also two conservation areas and many listed buildings.

## ANALYSING THE RESULTS

Detailed statistics are given in the companion volume, entitled 'Summary of Numerical Results'.

Although Seal (which includes Godden Green) is the largest and most built up of the three Wards and had more concerns than the two smaller and more rural Wards, there was a large measure of agreement in most general matters.

This is not just a survey of problems, it is also a survey of the features that people most value and want to preserve.

Later in this Plan you will find a table of respondents' chief concerns, and a timed action plan to tackle the problems. Many have already been identified by the Parish Council and it has taken the first steps to seeking solutions.

However, the very valuable, though less tangible, features constantly referred to in the survey responses included the natural beauty of the area and the friendliness of the communities.

Over 85% in all three Wards rated the village community, the rural environment, a countryside rich in wildlife, and peace and quiet, as important or very important.

*"just having a nice small town close by yet living with a lovely country outlook."*



There is of course a diverse range of opinions and solutions to problems, so we have concentrated on the ones which are of most concern and which are potentially achievable.



## TRAFFIC AND ROADS IN SEAL

The Steering Group, whilst studying a number of other Parish Plans, noted that the top concern in all of them was with the speed of traffic. It was also seen as the dominant problem in all three Wards in Seal Parish.

Seal has the greatest problems with the A25, a major route dividing the village along an east/west line. In the village itself, the peak-time congestion (and associated pollution) on the High Street has reached very serious levels, while speeding is a major problem at other times of the day. There is no acceptable route for a bypass to north or south of the village, so unless some traffic can be diverted to the motorway, more traffic management measures are essential.

Kent County Council has just adopted a new Traffic Calming policy, so any immediate future solutions will have to conform to this.

*"Traffic too fast on Seal High Street - suggest flashing 30 mph signs westbound into Seal, pavement markings and signs".*

*"Speed cameras in Seal catching speedsters coming down the hill".*

The only sensible solution that can be recommended is the long-standing proposal for the construction of an east-facing junction to the M25 at Chevening or the M26 at Otford. The Parish council should continue to support this via the A25 forum that brings together all relevant local bodies and authorities.

The second main problem arises on Childsbridge Lane, which links Kemsing, through the built-up housing area to the north of Seal village, to the A25. Speeding along this largely unlit road is endemic, and has caused several accidents. Since our survey, a local petition has been organised to press for more traffic calming measures on this road.

*"Childsbridge Lane is a speed track, The 30 mph limit is rarely adhered to ..."*



The Parish Council has been discussing the problems with the Highways Department for some time. Many of the ideas suggested in the survey (like chicanes on Seal Hill) have proved to be impractical or dangerous and do not meet with KCC Highways approval. A flashing "Road narrows" sign at the east entrance to the village is now being discussed with local residents. Otherwise the only option seems to be tighter enforcement of parking restrictions and of speed limits.

We urge the Parish Council to continue the search for ways to slow down traffic on the High Street.



## PARKING



### Seal

Parking is a major problem in central Seal. The Parish Council consulted residents in the centre of the village about a Residents' Parking Permit scheme but, because there would not have been enough bays for everyone living there, insufficient support was forthcoming and the proposal had to be dropped.

The existing ample car park on the Recreation Ground is little used by shoppers. It is worth pointing out that it is 250 to 300 steps (according to how far down one is parked) from the car park to the shops, and it takes about 3 minutes at normal walking pace.

As an experiment some years back the Parish Council paid to allow people to use a pub car park for short-term parking. However it was abused by people using it for long-term parking and had to be discontinued following the not unreasonable loss of goodwill of the publican concerned.

*"We need more double yellow lines. People don't park within bays. More visits by traffic wardens."*

We recommend shoppers use the Recreation car park and walk the short distance to the shops.



### Sevenoaks

There were complaints about night-time charging and lack of parking space in Sevenoaks from all three Wards. Also, the fact that short term parking of 4hrs was insufficient to even permit a brief daytime visit to London, for perhaps a hospital visit. Long-term car parks near the station were always full of commuter vehicles.

### Underriver

Only 31% think there is a parking problem and there is little support for creating parking on the village green.

When it is dry a friendly local landowner allows parking in a field when there is a major event.



There were several comments on the parking on the St Julian's Road by Knole Park (above).

*"Before long there is going to be a fatal accident there!"*

However parked cars can force traffic to slow down.

### Seal St Lawrence

Parking in St Lawrence was not considered to be a problem. Most comments, where made, were related to difficulties in Sevenoaks





Horses have replaced agriculture in much of the parish and become part of the rural economy.



## SPEEDING IN THE RURAL LANES

This was the major worry in all three Wards, where local people, visitors and tourists, use the lanes extensively for walking, bicycling, and horse riding. There were many different solutions offered, most of which do not fit into the highways regulations. The majority did not want any changes to the rural character of the lanes

*"It's rural, you don't expect facilities for pedestrians!"*

*"We have lost three feet of our verge in the five years we've been here".*



We are aware that the culture of driving as fast as you can with safety (and sometimes without) rather than as fast as you need, is endemic. Ignoring speed limits and other signs is widespread. However the objection to the speed of cars was by far the most dominant subject in the survey. Therefore we have picked out the suggested solutions that we think are practical and have a reasonable chance of being implemented.

We recommend the practice of the road maintenance teams of filling in the gaps at the edge of the roads with tarmac should be discontinued and instead planings should be used. The Highways Department has now accepted this policy, but parishioners need to keep an eye on the hole-fillers because the policy is not always followed. The wider the lanes become, the faster the cars go, and where there are no pavements the verges are a safety patch for walkers and horses.

We also recommend that these areas become part of the 'quiet lanes' scheme (already in force in Tonbridge and Malling Borough Council) where priority is given to non-vehicular users; we ask the Parish Council to discuss this option with SDC and KCC.

However there are doubts as to whether this is effective in slowing the traffic.

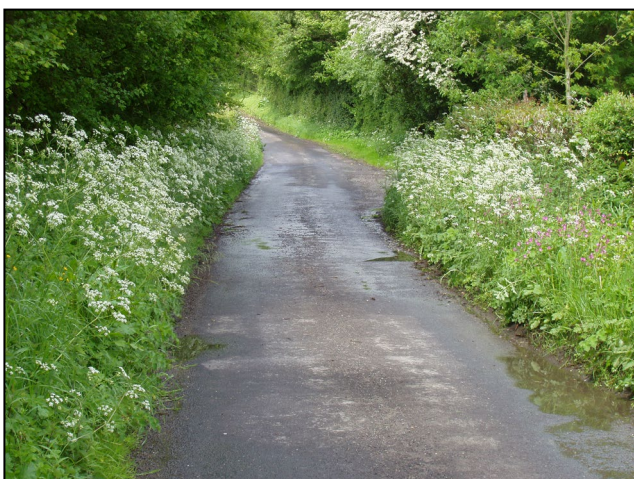


## VERGE CUTTING AND WILDLIFE

86% of responses in all three Wards considered a countryside rich in wildlife to be important or very important. This is often contradicted by a desire for tidiness. Wildlife needs undisturbed, unsprayed areas, and “weeds” which are hosts to insects, butterflies and small mammals. For example if there are no nettles on which tortoiseshell butterflies can lay their eggs, there will be no tortoiseshell butterflies.

*“When I first moved to Underriver I wondered why they didn’t keep the verges better cut. When I learnt why, I supported the policy. It’s really a matter of education”.*

We recommend that action be taken to ensure verge cutters are made fully aware of the need for, and value of, these vital corridors. We recommend that **rural lanes** (not main routes) are left until August or later, after the bird nesting and when the wild flowers have seeded. A survey in Underriver carried out a few years ago showed 97% support for this policy but it is frequently ignored. Only sightlines at key junctions need to be kept cut to ensure visibility and safety.



We recommend that in built up areas verges and hedges are cut sufficiently often to keep them safe and tidy.

## ROAD MAINTENANCE

There were considerable complaints about the condition of the roads and delay of the gritting in icy/snowy weather. The condition of the roads is clearly a concern for many parishioners. Since the questionnaire was issued there has been extensive re-surfacing in some areas.

*“Many potholes in local area, car tyres and wheels have had to be replaced due to damage”.*

*“Seal Hill should be looked after a lot better in freezing conditions”.*

*“Gritting is often too little, too late”.*

*“The road floods if the gullies and drains are not kept clear”.*

We ask the Parish Council to examine detailed complaints and to discuss them with the KCC highway department.



Hidden riches in a verge



Verges cut in May before the flowers have seeded and the birds have finished nesting.

## HOUSING



Housing was covered in detail in the Village Design Statements, but the topic also arose in the Parish Plan. A majority in all wards did not want any new development:

- St Lawrence 69%
- Seal 56%
- Underriver 53%.

Under the current Sevenoaks District Local Plan, there are hardly any sites suitable for new housing in Seal parish. Existing infrastructure would probably limit all but the very smallest development (1 to 5 houses maximum). Throughout the area there remains a serious problem of providing affordable rented housing for those on low incomes, and of finding cheap starter homes for sale to young families. Some replies recognise these needs:

- Underriver 32%
- Seal 30%
- St Lawrence 19%.

*"New housing entirely inappropriate"*

*"Not on Greenfield sites, not in conservation area".*

*"A balance of houses is essential but every application needs to be looked at in its own right. Young people need a chance – impossible at current prices".*

No recommendations can be made until the new Local Development Plan, which will also cover Tonbridge and Tunbridge Wells, is published. This will reflect central government's ideas on South East housing needs. Local District Councillors plan to arrange public meetings once it is ready.

## RUBBISH COLLECTION AND LITTER



Rubbish collection satisfied a large majority:

- Seal 90%
- St Lawrence 89%
- Underriver 86%

Nearly as many were satisfied with recycling facilities:

- Underriver and Seal 73%
- St Lawrence 61%.

There is a special problem around the recycling bins in the Recreation Ground in Seal, where broken glass creates a safety risk. The takeaway food shops are also a major source of complaint.

*"Fast food outlets ... create disturbance and large amounts of litter."*

*"Recycling is not taken away often enough and this means bottles are left in the Recreation Park which is dangerous and encourages vandalism".*

We urge more frequent clearance of the Seal recycling bins, and the cleaning of the surrounding area. We need to help the management of the two takeaway shops to solve the problem of cleaning the pavements outside their premises, and to encourage their customers not to dump their food containers in the local roads and lanes.

Although our perception is that there is strong objection to litter and dumping, there were few mentions of the subject in the comments from Underriver and St Lawrence. There is a positive tradition of picking up litter rather than walking past it, and ensuring dumping is cleared up as soon as possible.



We can only recommend that people who drop litter cease to do so! In some areas members of the public pick up litter whenever possible rather than walk by it. This is a very positive attitude and has a dramatic effect. We recommend that there is a campaign to persuade parishioners to regularly do a litter pick in the vicinity of their own homes, perhaps 500m each side of their property, and to 'adopt' particular local lanes as well. We also recommend that children are taught not to drop litter.

## TO IMPROVE FACILITIES FOR YOUTH

This was of great concern in Seal but much less so in the other Wards. Lack of opportunities for young people is perceived as a cause of vandalism and petty crime. The comments (61%) on the subject of vandalism in Seal were much the heaviest of all the questions. The main demand was for a meeting place, perhaps with soft drinks available.

Suggestions ranged from a Youth Club and youth projects to improved sports facilities. On sports facilities, skateboarding topped the list in Seal (and was also mentioned in Underriver and St Lawrence). Since our survey, the Parish Council has been involved in discussions with local youth and with the Outreach worker from KCC Social Services to see what further improvements can be made, such as a youth shelter on the Seal Recreation Ground where they can meet friends and socialise.



*"Somewhere for the kids to meet so they don't have to hang around on the street".*

The Parish Council already has such an initiative under active consideration, and significant funds have been earmarked. The youth of Seal are themselves attempting to raise grant funding and a Community Chest grant of £1500 has already been approved. The local school in Seal now offers a meeting place for teenagers on a Tuesday evening where workshops are run.

We strongly support all these initiatives and the action the Parish Council is taking.



Requests for skate boarding facilities was widely mentioned in the comments by families with children, although obviously the question "Would you use a skateboarding facility?" had a low response, considering the average age! There were 3 requests from St Lawrence, 5 from Underriver and 16 from Seal.

## IMPROVE POLICE PRESENCE AND CONSULTATION

This problem was mentioned frequently. 71% in Seal, 41% in St Lawrence and 32% in Underriver felt that a more visible police presence was necessary or desirable. In Seal it was mostly in connection with vandalism and with traffic problems. One frequent complaint was that passing patrol cars would not do much to help. Few seem to realise that Seal and surrounding villages already have a dedicated Parish Police Constable – see Directory on page 23. Since our survey, the Seal and Kemsing Parish Councils have been discussing with Kent Police Authority the provision of a shared civilian Police Community Support Officer. This requires government funding and if it is made available the scheme will probably start in 2006.

*"A greater police presence – foot patrol and home beat officer".*

We strongly support this initiative



## COMMUNICATION IN THE PARISH



Fewer people read notice boards than read the local press.

There is little difference between the Wards.  
Across the Parish:

- 23% read minutes of Village Associations
- 24% read minutes of Parish Council meetings
- 61% read their local newssheet
- 77% read the Seal Advertiser
- 87% read The Sevenoaks Chronicle

Hardly anyone looks at the websites at the moment, but this is expected to increase as more and more people become familiar with the medium.

There were many comments on Parish Council meetings – in Underriver, second only in number to traffic issues – and they were almost all negative:

*"Boring",  
"No time",  
"Not interested  
"After the debate nothing seems to  
happen"*

However, as this Parish Plan shows, the Parish Council is trying hard to communicate its activities.

It seems that the only time meetings attract people is when there is a problem that affects them personally.

The Village Association minutes are put on the notice boards, and the Parish Council minutes are posted monthly. The Seal and Underriver notice boards are outside the village halls, and the main St Lawrence one is by the bus stop.

The Local Advertiser now carries reports from the Parish Council, and the Underriver Newsletter has also widened its scope recently.

We recommend people offer entries to newsletters to make them more interesting, and that they read the minutes of meetings if they want to know what the Parish Council is doing.

## MISCELLANEOUS TOPICS

*We have picked out subjects that have over 50% agreement and are not covered elsewhere.  
"Don't knows" are not included.*

### Shopping

57% thought shopping in Sevenoaks was reasonable and 67% that out of town supermarkets were good.

### Surgery

67% of Seal parishioners would like a doctor's surgery in Seal.

### Light pollution

59% from Underriver think light pollution is a problem. However, 65% from St Lawrence and 58% from Seal do not think it is a problem. BUT a bigger total (65%) think the council should take action on the subject!

### Bus services

In a car owning area very few claim they would use a better service. For the same reason, very few have a problem with visiting doctors, etc, but non-car owners, especially old people, still have difficulties, as their replies made clear.

### Recreation grounds

75% in Seal value the recreation ground and its facilities, 54% in St Lawrence and 45% in Underriver.

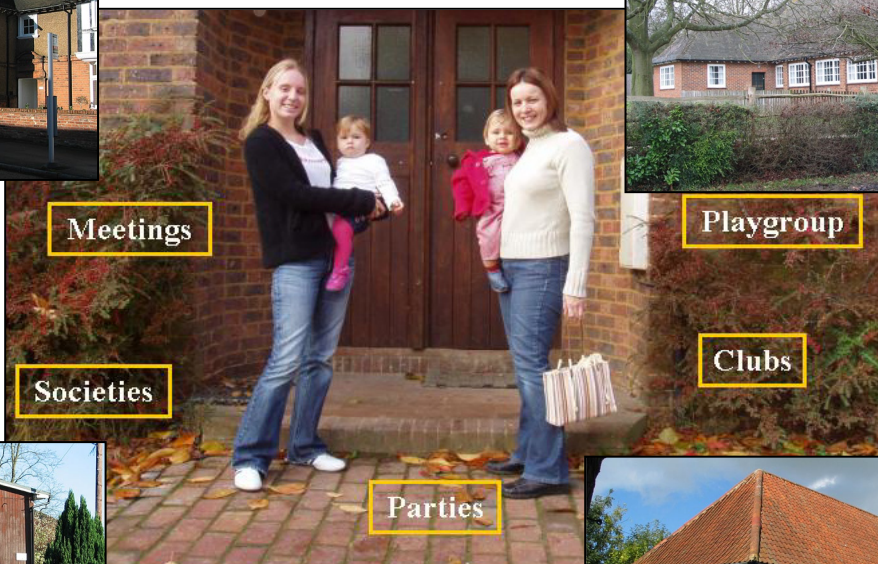






**The Parish Plan is not only about complaints.  
It is also about the things that are valued by the people who live there.  
The following pages illustrate what they value and want preserved.**

Community life is considered important or very important by 85% of parishioners and the improved Seal Pavilion, Village and Church Halls contribute towards this. The central picture illustrates some of the activities that they host. There were suggestions for further activities in the survey, but the request for volunteers did not produce a matching response.

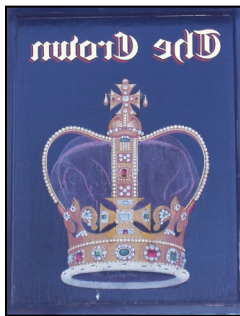


Seal has a library that will only survive if it is used.

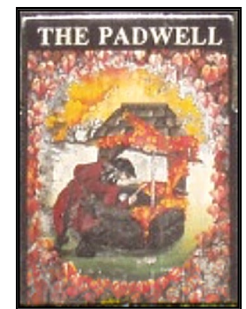
## SCHOOLS & PUBS



Seal & St Lawrence still have schools. Underriver lost its school some time ago.



65% thought pubs were an important local asset. Unfortunately the usage level is much lower, risking their eventual closure. There was no common factor in the comments. Approval of no smoking received the most (24) and child-friendly features the second (14)



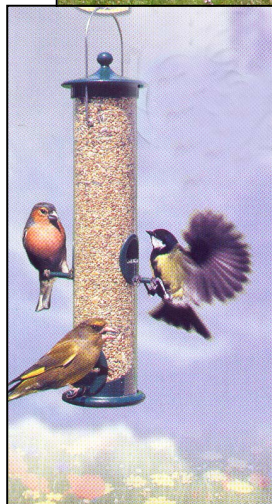
Telephone numbers are in the Directory (Page 22) for all Pubs and other Parish facilities.



## WILDLIFE



We have the now rare dormouse in the parish. It needs nut orchards and coppiced woodland to flourish.



### **85% want a countryside rich in wildlife**

Managing the countryside for wildlife requires resources and knowledge. Many people want a park-like countryside of neat grass and hedges, known to conservationists as “green deserts”. However there are landowners and gardeners who have done much to enhance conditions for wildlife in the area.





**ACROSS THE PARISH 87% CONSIDER IT IMPORTANT OR VERY IMPORTANT TO  
PRESERVE THE RURAL ENVIRONMENT**





## 68% THINK IT IS IMPORTANT OR VERY IMPORTANT TO PRESERVE THE CHURCHES



Many people in the Parish felt the churches could be used for alternative but suitable functions, such as concerts and flower festivals. This would increase the use of the churches and could well increase their revenue by the imposition of a hire charge. This can only help to preserve and protect vulnerable churches. Such functions have already been held in the local churches from time to time.

## FOOTPATHS & BRIDLEWAYS

As in other areas of community life, people think it important to preserve things even though they do not necessarily use them.

71% thought the preservation of footpaths and bridle paths important but far less claimed to use them.

Kent has more miles of footpaths than any other county in the whole of England, and prides itself on their upkeep. The Council relies on reports of problems from walkers as it is impossible to inspect them all.





## A CHALLENGE TO COMMUNITIES?



- The parish has beautiful rural lanes.
- Speeding vehicles have driven many vulnerable users away.
- Child cyclists are nearly an extinct breed.
- Only 8% do not want speed on lanes reduced.
- The authorities put up signs everywhere but these do not solve the problem.
- It is impossible to police rural lanes.

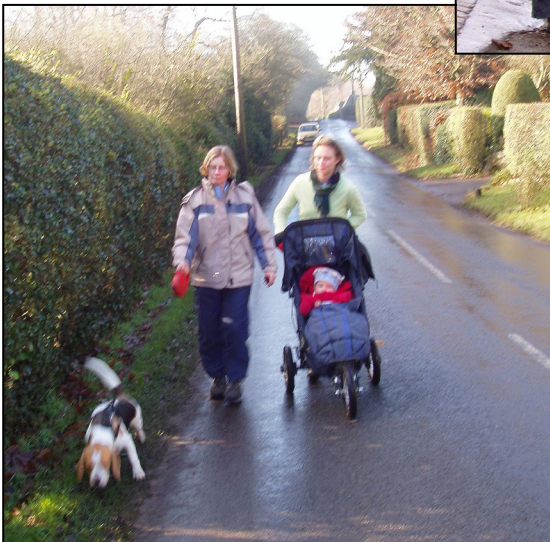
### CAN LANES BE RECLAIMED?

*"Shift the balance of road use so that walkers, riders and cyclists are regarded as equal to vehicular traffic."*





We need to make the lanes safer for vulnerable users without altering their character in any way





<b>Seal Parish Action Plan Recommendations</b>	<b>Ideas for Action</b>	<b>Target Date</b>	<b>Group Responsible</b>	<b>Funding Possibilities</b>
Construction of an east-facing junction to M25 at Chevening or the M26 at Otford.	Parish Council to pursue in A 25 forum	Dependent on central Government	Parish Council, SDC & KCC, Dept of Transport	Central Government highways budget
More palliative highways measures on the A25 including the enforcement of speed limits.	Parish Council to press SDC, KCC & Police	Ongoing	Parish Council & police	KCC budgets/Kent Police
Series of chicanes along Childsbridge Lane, additional lighting if necessary; new pedestrian crossing at Zambra Way.	PC to discuss with KCC & SDC	By mid-2007	Parish Council	KCC Highways budget
Stop filling roadside gaps with tarmac, use planings instead. Identify & improve passing places	Parish Council to discuss with KCC Highways dept.	Ongoing	Parish Council	KCC
Discriminate with verge cutting: leave rural lanes until after July except at key junctions, keep them trim where there is housing.	Parish Council to discuss with KCC	Ongoing	Parish Council	KCC under existing budget
Act on complaints on road maintenance and gritting.	Parish Council to discuss specifics with KCC	Mid 2006	Parish Council	KCC budget
Keep future government plans for housing under review.	Parish Council to monitor position regularly with SDC.	Continuing	Parish Council	Nil
Identify a few small sites for low-cost social housing and starter homes.	Parish Council to review possibilities & discuss with SDC.	Ongoing	Parish Council/local people	Minimal
More frequent clearance of recycling bins at Seal, & cleaning of the surrounding area.	Parish Council to discuss with SDC; and to arrange cleaning.	Already begun	Parish Council	Minimal
Better control of litter around take-away food outlets in Seal.	Shop owners and customers.	Early 2006	Shop owners in consultation with the PC.	Minimal
Improve facilities for youth in Seal village	Parish Council & youth worker	Already under review	Parish Council/young people	Within availability of grant funding
Improve police presence especially in Seal village.	Parish Council to continue discussions about a PCSO with Kemsing	2006	Seal & Kemsing Parish Councils	Part Parish funding may be available/Parish Precepting
Public Rights of Way (PROW)	Local people/Parish Council	Ongoing	Parish Council/KCC	Grants periodically available/Parish Precepting

# Seal Parish Directory - {A sample of some useful local services & contacts}

## Seal Businesses & Contractors

Andy Ball, Tree Services, Seal .....	01732 762100
Botanical (Flowers).....	01732 761500
H W Coldbreath, Butcher, Seal.....	01732 761040
Déjà Vu, Seal (clothes) .....	01732 762155
Forge Garage, Seal.....	01732 762222
House of Seal, Seal, hairdressers .....	01732 761182
Highland Printing, Seal .....	01732 762131
Ightham Carpet Centre, Seal .....	01732 762543
It's a Dog's Life .....	01732 763457
Lee Dicketts & Co, Chartered Accountants, Seal .....	01732 762655
Dave Martin, Painter, Seal, .....	01732 762255
Post Office, Seal.....	01732 761488
S.G.E Seal Ltd, Seal.....	01732 761724
Seal Garage .....	01732 762026
Seal General Stores .....	01732 763327
Sealclean, Seal .....	01732 761561
Edward Tyrrell Fencing Ltd, Seal.....	01732 762277

## St Lawrence Businesses & Contractors

BRS Landscapes .....	01732 763289
Mitchell Robert Partnership (Fruit growers), Foxbury Farm.....	01732 810246
Steven Tait Decorating Services .....	01732 762665

## Clubs and Societies

Allotments, Seal, Patrick Coffey.....	01732 762640
Bell Ringers (Seal), P Thompson.....	01732 452380
British Legion (Woman's Section), Ann Butcher.....	01732 762408
Cricket Club, Underriver, Michael Tong .....	01732 832069
Cricket Club St Lawrence, Mr Webster.....	01892 862017
Football Club, Stone Street, Mr Burrows.....	01732 461189
Horticultural Society, Seal, Jill Downton .....	01732.810457
Horticultural Society, Underriver, Mary Owlett, Secretary .....	01732 838716
Mother's Club (Seal), Mrs E Burgin.....	01732 455408
Over-60s, Seal, Mrs P Martin .....	01732 762438
Petanque, Seal (Contact via The Crown Pub).....	01732 761023
Short Mat Bowls, Seal, Mrs Twiner.....	01732 763323
Short Mat Bowls Club, St Lawrence.....	01732 763832
Senior Football Club, Seal, Michael Deamer.....	07801 240927
St Julians Club .....	<a href="http://www.stjulians.co.uk">www.stjulians.co.uk</a> .....01732 458261
Junior Football Club, Seal, Secretary Mrs Norvers .....	01959 524487
St Lawrence Village Association, Graham Moynes .....	01732 760640
TUG (Underriver Thursday Group).....	01732 833271
Underriver Village Association, Anne-Marie Jordan, Secretary .....	01732 832187
Underriver Players, Arthur Rucker .....	01732 833227

## Pubs and Restaurants

The White Rock Inn (public house), Underriver.....	01732 833112
Seal Kebab and Pizza, Seal .....	01732 763999
The Tandoori Night, Seal (restaurant) .....	01732 763055
The Five Bells, Seal (public house) .....	01732 761503
Chiana Peking, Seal (restaurant), Seal .....	01732 763000
The Crown, Seal (public house).....	01732 761023
The Kentish Yeoman, Seal (public house).....	01732'761041
Padwell Arms, Stone Street (public house).....	01732 761532
The Snail, Stone Street (bar, restaurant) .....	01732 810233
The Bucks Head, Godden Green (public house).....	01732 761330

## Schools and Pre-schools

Seal Tiddlers .....	01732 760606
Seal Village Pre-school .....	01732 522573
Seal C of E Primary School, Tracey Smith, Headmistress .....	01732 762388
St Lawrence C of E Primary School .....	01732 761393
St Lawrence Pre-School .....	01732 763354
Top Banana Pre-School, Memorial Pavilion, Seal .....	01959 523497
Underriver Under 5s (Nursery) .....	01892 533471

## Churches and Library

Seal Library, Lesley Edmeads .....	01732 762510
St Lawrence, Stone Street, Seal, Rev Michael Cooke, Vicar .....	01732 761766
St Margaret's, Underriver, Rev Michael Cooke, Vicar .....	01732 761766
St Peter & St Paul, Seal, Rev Anne Le Bas, Priest in Charge .....	01732 762955

## Village and Church Halls

Church Hall, Seal, (Jill Myers) .....	01732 762803
Seal Pavilion, Seal Rec (Bookings) .....	01732 763488
Village Hall, Seal (Bookings) .....	01732 366743
Village Hall, Stone Street (Bookings) .....	01732 760843
Village Hall, Underriver (Bookings) .....	01732 833224

## Councils / Councillors

Kent County Council, County Hall, Maidstone .....	08458 247247
<i>Local member, Nick Chard, Sevenoaks:</i> .....	07885 787511
Sevenoaks District Council (Office) .....	01732 227000
Peter Coates, District Councillor, Email: <a href="mailto:cllrp.coates@sevenoaks.gov.uk">cllrp.coates@sevenoaks.gov.uk</a> .....	01732 762129
Rachel Allen, District Councillor, Email: <a href="mailto:cllr.allen@sevenoaks.gov.uk">cllr.allen@sevenoaks.gov.uk</a> .....	01732 838219
Seal Parish Council, Lorna Talbot, Parish Clerk .....	01732 763488
Seal Parish Council, Email: <a href="mailto:sealparishcouncil@btinternet.com">sealparishcouncil@btinternet.com</a> .....	

## Underriver Businesses and Contractors

Alan Dagnall, photographer .....	01732 832593
Anna Dagnall, pilates instructor .....	01732 832593
Chris Comber, swimming pool maintenance .....	01732 832567
Claire Powell, desktop publishing .....	01732 832763
Malcolm Severs, graphic design & animal photographer .....	01732 838994
Mike Williams, sports tour specialist, ABTA reg. ....	01732 833324
P P Broad, Agricultural Contractors .....	01732 850718
Rob Crouch, fencing contractor .....	01732 838428
Robin Watson, builder and project manager .....	01732 833930
Romshed, organic eggs and meat, Fidelity Weston <a href="http://www.romshedfarm.co.uk">www.romshedfarm.co.uk</a> .....	01732 463372
Sue Woods, boarding kennels & western riding .....	01732 762913
Tedd Mills, HIS Contracts (carpeting) <a href="http://www.hiscontracts.co.uk">www.hiscontracts.co.uk</a> .....	02077 391455

## Local Newsletters/Magazines

Underriver Newssheet, Arthur Rucker, editor .....	01732 833227
Your Local Advertiser, Julian Gilchrist, Email <a href="mailto:highlandprinters@aol.com">highlandprinters@aol.com</a> .....	01732 762131

## Other Useful Numbers

Arriva Buses .....	0870 6082608
Citizens Advice Bureau, Sevenoaks .....	01732 454443
National Rail Enquiries .....	08457 484950
Police, West Kent, Tonbridge .....	01732 740055
Police, Sevenoaks Community Unit .....	01732 370774



## ACKNOWLEDGEMENTS

<b>Steve Myers</b>	Key driving force at the beginning and the first Executive Chairman.
<b>Tony Ansell</b>	<b>Seal Parish Council</b> For the data capture/analysis program, and preparation of the Numerical Results Volume; and assistance with the Parish Plan layout.
<b>Robert Whiddett</b>	For carrying out the monumental task of data entry for all 410 returned questionnaires.
<b>Lisa Hoff</b>	Who served initially as secretary to the Steering Group.
<b>Tony Simon</b>	Who briefly acted as Chairman of the Steering Group.
<b>Fraser McGregor</b>	<b>Sevenoaks District Council GIS (Mapping) Team</b> who provided invaluable assistance in generating the bespoke Parish Map
<b>Neil Johnstone</b>	
<b>Julian Gilchrist</b>	For helpful advice on the mysteries of commercial printing, and organising the printing.
<b>Edna Challoner</b>	} For advice from <b>Challock Parish Council</b> .
<b>Freda Cantle</b>	
<b>Lorna Talbot</b>	<b>Seal Parish Council Clerk.</b>
<b>Colin Milligan</b>	<b>Seal Parish Council Chairman.</b>
<b>Seal Parishioners</b>	A big thank you to all Parishioners who took the trouble to make their views known on the issues that are important to them and, without whom, this Plan would not have been possible.
<b>ACRK</b>	(formerly <b>KRCC, Kent Rural Community Council</b> ) for their helpful advice.
<b>The Countryside Agency &amp; Seal Parish Council</b>	For their advice and financial contributions to the preparation of this Plan.